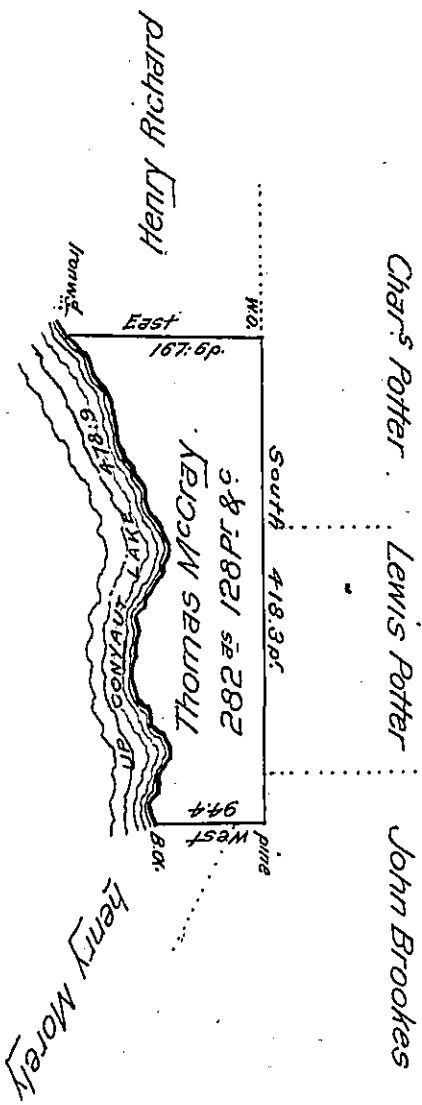


FORM No. 1.



Courses Up Conyait Lake

N. 22 W. 9.7
N. 1 W. 14.2
N. 32 E. 30
N. 1 E. 18
N. 55 W. 42
N. 9 W. 20
N. 12 E. 22
N. 4 W. 22
N. 23 E. 45
N. 31 E. 22
N. 22 W. 32
N. 9 W. 22
N. 40 1/2 W. 20
N. 32 W. 19
N. 10 1/2 W. 58
N. 26 W. 31
N. 40 W. 16
N. 1 1/2 W. 20
N. 26 W. 15
478.9

Situate on the West side of French Creek In Allegheny County containing 282^{sq} 128 p^r and allowance of six p^r Cent for roads &c Surveyed the 10th day of October 1796 In pursuance of his Improvement Bearing date the day of 26th Augt. 1793.

Wm Power D^y Sr

To Dan^l Brodhead Esqr
Surveyor General

IN TESTIMONY that the above is a copy of the original remaining on file in the Department of Internal Affairs of Pennsylvania, made conformably to an Act of Assembly approved the 16th day of February 1833, I have hereunto set my hand and caused the Seal of said Department to be affixed at Harrisburg, this eighteenth day of January 1907.

Loace R Brown
Secretary of Internal Affairs.